



2024 OFFSHORE Sailing Instructions



**Gladstone Ports
Corporation**

Growth, prosperity, community.



Race Day: Saturday 10th February 2024



SURF TO CITY OFFSHORE SAILING INSTRUCTIONS **2024**



IMPORTANT CONTACTS

RACE CONTROL

VHF Channel: 21

Secondary VHF channel: 81

Race Control: "Surf to City Race Control"

Mobile: 0498 256428

Email: raceentries@qcy.com.au

Race Day Hours: 1100hrs on Saturday
10th February until last boat finishes.

START BOAT

VHF Channel: 10

Start Boat: "Surf to City Start Boat"

The start boat will monitor VHF Channel 10

FINISH BOAT

VHF Channel 72

Finish Boat: "Surf to City Finish Boat"

BRISBANE VTS

VHF Channel: 12

AMENDMENTS TO THE SAILING INSTRUCTIONS

For the use of competitors. Please list any amendments to the Sailing Instructions issued by the Organising Authority here for easy reference.

AMENDMENT NUMBER	SECTIONS CHANGED	GENERAL NOTES
1		
2		
3		

The 2021–2024 Racing Rules of Sailing under 'start' and 'finish' both refer to the 'hull' of a vessel. By way of definition the QCYC sailing committee has determined that "**bowsprits, spinnaker poles, prods, and bow pulpits are NOT part of a "hull"**".

COMMUNICATION REQUIREMENTS

LOGGING IN PRIOR TO START

Seaway Tower on VHF 73

(refer SI 12)

REPORTING DURING RACE

Skeds by Marine Rescue Brisbane on VHF 21
secondary channel VHF 81.

If unable to make contact via VHF, SMS
position to 0498 256428
(refer SI 17)

CALLING FINISH BOAT 1/2nm BEFORE FINISH

Surf to City Finish Boat on VHF 72

Call again after finishing if dark
(refer SI 20)

WITHDRAWAL

Contact Race Control

(refer SI 21)



1. RULES

1.1 General

The race will be governed by the current versions of:

- the rules, as defined in the Racing Rules of Sailing (RRS) 2021-2024 of World Sailing;
- the IRC 2023 Rules Parts 1, 2 and 3 as amended;
- the ORC Rating System 2023 rules as amended;
- the AMS/SMS Rule Book Edition 15 - 2023-24 as amended;
- the OMR Specification 2023 rules as amended;
- the rules and regulations of each One Design Class for which there is an eligible boat entered in the race;
- the current Prescriptions, Special Regulations and amendments of Australian Sailing (Special Regulations) effective 1 July 2021;
- applicable Special Regulations category:
 - Offshore Fleet – Category 4 Uprated
- and the Notice of Race (NOR) except as any of these that are modified by the Sailing Instructions (SI)

1.2. Hours of Darkness

Between sunset and sunrise, when a yacht cannot determine with certainty what tack the other yacht is on, she shall keep clear of that yacht. Competitors are reminded that part of the definition of “room” includes taking into account the existing conditions (including visibility).

Official sunset and sunrise shall be as given by timeanddate.com

1.3. Commercial/non-competing Traffic

The Racing Rules of Sailing (RRS) will apply only between those boats that are participating in the event, for the duration of

the event. Should interaction occur with non-participating ships, the COLREGS shall apply and shall over-ride all other rules.

In particular, attention is drawn to Rule 9 - 'Narrow Channels':- a sailing vessel shall not impede the passage of a vessel which can safely navigate only in a narrow channel or fairway.

Any vessel interfering with commercial traffic WILL be disqualified.

1.4. Organising Authority

The Organising Authority is the Queensland Cruising Yacht Club Inc.

2. TIME OF START

2.1 The Monohull start is scheduled for 1000 hours on Saturday February 10th

2.2 The Multihull start is scheduled for 1010 hours on Saturday February 10th

2.3 The Warning Signal for the Monohulls will be code flag “Q” and will be displayed not before 0955hrs Saturday February 10th

2.4 The Warning Signal for the Multihulls will be code flag “T” and will be displayed 5 minutes after the monohull start

2.5 The race may not start whilst an official Gale Warning (or stronger) is current for any part of the course and may be postponed or abandoned.

3. RESPONSIBILITY

3.1 The safety of a boat and her crew is the sole and inescapable responsibility of the person in charge who shall do their best to ensure that the boat is fully found, thoroughly seaworthy and manned by an experienced crew who have undergone appropriate training and are physically fit to face bad weather. They must be satisfied as to the soundness of hull, spars, rigging, sails and all gear. They shall ensure that all



safety equipment is properly maintained and stowed and that the crew know where it is kept and how it is to be used. They shall also nominate a person to take over the responsibilities of the Person in Charge in the event of their incapacitation.

3.2 Neither the establishment of these Special Regulations, their use by race organizers, or the inspection of a boat under these Special Regulations in any way limits or reduces the complete and unlimited responsibility of the person in charge.

3.3 The attention of every person is drawn to Special Regulation 1.02 and also to the importance of having suitable and adequate personal insurance. It is the responsibility of owners to ensure their crew has had this drawn to their attention.

4. OFFICIAL NOTICE BOARDS

4.1. Brisbane: Administration Office, Queensland Cruising Yacht Club.

4.2. Southport: Reception Area, Southport Yacht Club

5. RACE BRIEFING

5.1 A compulsory Race briefing (including a Weather Briefing) will be held at Southport Yacht Club Board Room at 2030 on Friday, February 9th, 2024. To avail potential concerns about Covid and recommendations to avoid congregating in large numbers indoors, arrangements have been made to provide a choice for race briefing attendance and participation.

The skipper and at least one member of the crew competing in the Race must either physically attend the whole of the race briefing or participate via electronic media. It is recommended that the skipper and the (designated) navigator attend in this

manner. Arrangements will be made for the race briefing to be broadcast via Facebook on Live Stream at the Race Facebook page.

Those watching the Facebook Live Stream will be asked to either like the stream at its conclusion or post a comment declaring they have viewed it, to ensure their record of participation. Either method will allow participants to ask questions in the course of the briefing.

It is recommended that all other crew members watch the Live Stream.

6. INSPECTION AND INFORMATION

6.1. Boats shall be made available for spot inspections by the Race Committee or its nominee at any time from 3pm on the day prior to the race start until four hours after the recorded finish time.

6.2. Personal information is obtained about on shore yacht contacts and crew members in the crew list. That information is obtained for use in search and rescue situations and for media purposes. The information will be given to search and rescue authorities and organisations, the Water Police, Marine Rescue Units and media representatives, and may be passed on by them to other organisations. Crew members may gain access to the information held about them by contacting the Organising Authority.

7. TIDES AND DEPTHS

7.1 Tides

Saturday, February 10th

HIGH 1.92mtr @ 08:41 (GCS)

LOW 0.40mtr @ 16:46 (BB)

HIGH 2.08mtr @ 22:15 (BB)

Sunday, February 11th

LOW 0.22mtr @ 04:20 (BB)

HIGH 2.77mtr @ 10:45 (BB)

LOW 0.36mtr @ 17:28 (BB)

GCS – Gold Coast Seaway

BB – Brisbane Bar

8. HANDICAP CATEGORIES, DIVISIONS AND SCORING

8.1 Categories and Divisions

The Surf to City Yacht Race will be conducted with the following handicap categories:

- IRC monohulls
- ORCi monohulls
- AMS monohulls
- OMR multihulls
- Performance Handicap Rating Formula (PHRF) Boats – monohull & multihull
- Two handed PHRF monohulls (also eligible for PHRF overall subject to RRS52 as modified)

The composition and allocation of boats into Divisions in a Handicap Category will be determined by the Race Committee and shall not be subject to protest or grounds for a request for redress (amends RRS 60.1 and 62.1(a)).

8.2 Scoring

Scoring will be calculated as defined in NOR 8.

9. CHANGES TO SAILING INSTRUCTIONS

Changes to Sailing Instructions shall be in writing and posted to the Race Website and social media and emailed to skippers and/or boat representatives.

Code Flag “L” may accompany changes made following the conclusion of the Competitors Briefing and if so will be flown from the Flagpole located to the east of the SYC Main Beach Clubhouse. Changes will be posted no later than 0830 hours on the day of the race.

On the water, changes will be communicated on the race channel prior to the warning signal.

This amends RRS 90.2c.

10. REPORTING AT START

Boats intending to start shall Log On for the race with Seaway Tower on VHF 73.

Log on must not be attempted before 8am. Log in details to be given are boat name, number of people of board, boat registration number and a mobile phone number.

11. START LINE

Refer to Appendix A for start line location.

11.1 The Start Line will be an imaginary line between the main mast of the committee Vessel flying a SYC Burgee above an orange flag at the Starboard end of the line and an ORANGE inflatable buoy at the Port end of the line.

11.2 A limit mark (ORANGE inflatable buoy) may be placed at the starboard end of the line between the start vessel and the start buoy, if a yacht passes between this limit mark and the start vessel they must re-start by rounding the start vessel and start correctly.

11.3 The start line will be established not less than 20 minutes before the warning signal for the first start.

11.4 Vessels in the second start are not to occupy the start line and area immediately south of the start line (pre-start area) until all vessels from the first start have started and cleared the start line.

11.5 The "I Flag Rule" (RRS 30.1) will apply from the one minute signal. When any part of a boat's hull, crew or equipment is on the course side of its starting line or its extensions during the one minute before the starting signal, the boat shall return to the pre-start side of its starting line around either end of the line and start (amends RRS 30.1).

12. START SIGNALS

12.1 Visual signals will be made from the Start Boat.

12.2 Visual signals take precedence over sound signals.

12.3 The race will be started in accordance with Rule 26. The Class Flag for the Monohulls will be code flag "Q" and the Class Flag for the Multihulls will be code flag "T".

12.4 The start boat will be monitoring VHF Channel 10.

13. RECALLS

13.1 Individual recalls will be signalled in accordance with RRS 29.1 from the Start Boat. A sound signal may be made (amends RRS 29.1).

13.2 A boat subject to recall will pass around either end of the line before recrossing the line to correctly start. (in accordance with RRS 30.1)

13.3 A boat subject to recall may be identified by a Race Officer on VHF 10, transmitted up to five minutes after the start signal.

14. THE COURSE

Refer Appendix A.

15. RADIO SCHEDULES

15.1. Radio Schedules will be conducted on VHF 21 by Marine Rescue Brisbane

15.2. The radio schedules will commence at the following times:

Saturday

1415 hrs
1815 hrs
2215 hrs
0215 hrs
0615 hrs
1015 hrs

Sunday

Following the announcement of the sked, yachts will be called in alphabetical order. Each yacht shall reply giving its Latitude and Longitude to the nearest minute.

15.3 Yachts who are relaying the position of another yacht in the fleet should do so once all boats have been called.

15.4 Yachts who are unable to provide their coordinates by VHF should text their position to **0498 256428**. This should be employed as a backup method only.

15.5 Yachts who have retired from the race shall remain on the Radio Schedules until they have reached safe port.

16. FINISH LINE

Refer to Appendix B.

16.1 The finish line will be an imaginary line between the flag mast of the QCYC Finish Boat stationed approximately half a mile

north of the Fisheries Beacon and an Orange inflatable Buoy positioned approximately 200m north of the Finish Boat. The finish boat will form the Port end of the line and the buoy will form the Starboard end of the finish line.

16.2 The inflatable Orange buoy may be lit with a white strobe light. Failure of the strobe light will not be grounds for redress.

16.3 The approx. position for the finish boat will be 27 18.85S 153 06.64E

The approx. position for the orange buoy will be 27 18.74S 153 06.68E

Fisheries Beacon is a special yellow beacon located approx. 27 19.40S 153 06.43E

16.4 When finishing after sunset, yachts are to contact the Finish Boat (call sign: Surf to City Finish Boat) on the Race Channel when approx. half a nautical mile from the finish line.

16.5 When finishing after sunset, yachts will illuminate their Sail Numbers and after finishing will contact the Finish Boat (call sign: Surf to City Finish Boat) by hailing or calling on the Race Channel to ensure they have been correctly identified.

16.6 If the finish boat is not on station a Yellow Buoy in approximate position 27 18.96S 153 06.60E will form the port end of the Finish Line.

17. WITHDRAWALS

17.1 Any yacht withdrawing from the race is required to notify the Race Control as soon as possible with its position, reason for retirement and proposed destination. They should contact the Race Control Centre again once the yacht has reached its destination.

17.2 Notification of withdrawal via Facebook and other social media is not acceptable

17.3 Competitors who withdraw from the race before the start are required to telephone Race Control on 0498 256428.

17.4 Should the yacht not be able to contact the Race Control, they should contact a third party and ask them to relay a message to the Race Control.

17.5 Failure to comply with this section may result in an unnecessary search and rescue with the cost being born by the offending owner and skipper.

18. MISCELLANEOUS

18.1 Yachts experiencing wind strengths of 40 knots or greater are required to radio in their position and wind and wave conditions being experienced to Marine Rescue Brisbane on VHF 21.

18.2 Yachts that fail to complete and submit all necessary race documentation to the Race Director within one hour of the completion of the Compulsory Briefing will be recorded as non-starters.

18.3 All boats are to keep a radio watch on VHF Channel 12 in the vicinity of commercial shipping channels.

19. TIME LIMITS

19.1 A boat shall not start later than thirty minutes after the starting signal.

19.2 There shall be no finish time limit.

20. DECLARATIONS

Refer to the end of this document for a copy of the declaration form.

20.1 All boats shall lodge a declaration. Declarations should be lodged with the

Race Director within two hours of finishing.
This can be done by:

- Posting your declaration into the declaration box located in the QCYC reception area.
- Emailing to raceentries@qcy.com.au
- SMS photo to **0498 256428**

Failure to lodge your declaration by 1000hrs on Sunday 11TH February or within two hours of finishing, whichever is later, will result in a race time penalty of five minutes being added to the yachts elapsed race time.

20.2 The following circumstances shall be noted:

- an infringement occurs, however minor, of any rule, regulation, sailing instruction or radio instruction; or
- the boat has taken a One Turn or Two Turns Penalty; or
- the boat acknowledges a Scoring Penalty in accordance with RRS 44.3; or
- the boat records its own finish time under SI 19.4; or
- compliance with the SIs and RRS.
- if possible, the yachts finishing immediately in front and behind.

21. RESULTS

21.1 Provisional and Final Results

Provisional or final results will be provided following the conclusion of the Presentation of Trophies. Further, they will be posted to the Race Website and Facebook Page as soon as practical following the conclusion of the Presentation of Trophies.

21.2 Progressive Positions

During the race, progressive positions may be published by the Race Committee and on the Race Website. Any progressive results that are published will have no bearing on, nor affect, the final results and will not form the basis of a protest or constitute grounds for redress (amends RRS 60.1 and 62.1(a)).

22. TROPHIES

The Surf to City Offshore Division Trophy Presentation event begins not before 12:00 midday on Sunday 11th February 2024 at Queensland Cruising Yacht Club.

A crew member of the yacht must be present at the presentation to receive any prizes. Prizes not collected during the presentation will not be available for collection at a later date.

Prizes will be awarded to First in each Category and Division. Categories or Divisions with five boats or more will be awarded Second place prizes. Categories or Divisions with seven boats or more will also have a Third place prize.

PHRF divisions with more than five boats will be awarded Line Honours prizes. All PHRF fleets will also have a winner overall award.

Other prizes may be awarded as determined by the OA.

23. RULE INFRINGEMENTS

(Amends RRS 44, 63.1 and 64).

23.1 The Protest Committee may apply a scoring of up to 40% or time penalty in lieu of disqualification for an infringement of a rule or sailing instruction.

23.2 A boat which is found after a protest hearing to have infringed RRS Part 2 or

Rule 28 shall receive a scoring penalty of 30%.

24.3 All penalties, unless otherwise specified, shall be computed as a percentage of the number of entries to the nearest whole number (rounding .5 upwards) in each Category or Division.

23.4 A boat that causes serious damage or injury to another boat or its crew or for an infringement of RRS69.1 may be disqualified.

24. APPLICATION OF PENALTIES

(Amends RRS 44.3 (c))

24.1 A boat infringing in more than one incident shall receive a separate penalty for each infringement.

24.2 Placings will be awarded after the imposition of penalties or granting of redress.

24.3 The imposition of penalties will affect the placing of other boats, which shall be advanced to fill all preceding places vacated by penalised boats, subject to tied, elapsed or line honours results. If two or more boats share the same placing after the application of penalties, the boat(s) with the least or no penalty shall be placed above the boat(s) with the greatest penalty.

24.4 The Race Committee may impose a penalty on a boat without a hearing in respect to any rule infringements disclosed by the boat in its Declaration, except that the boat shall be entitled to a hearing when it satisfies the Protest Committee that an error may have been made (amends RRS 63.1)

25. NUMBER OF ENTRIES

For the calculation of penalties and results, the number of entries in each Handicap

Category and Division shall be in accordance with the List of Entries as posted at the time of the Race Briefing.

26. PROTESTS AND REQUESTS FOR REDRESS

(Amends RRS 61, RRS62, RRS T1 and RRS T2)

26.1 Protests shall be in accordance with RRS 61.

26.2 Protests concerning eligibility of a boat shall be delivered to the Race Director within two hours of the conclusion of the Race Briefing.

26.3 Protests or requests for redress arising from the Race shall be delivered to Race Control within two hours of the finishing time of the protesting boat.

26.4 RRS Appendix T (Arbitration) applies and is extended to also include Rule 28 and Part 4 of the RRS.

26.5 Post-race penalties given via arbitration may include time penalties.

26.6 There is no time limit for protests by the Race Committee or Protest Committee.

26.7 The Protest Committee shall not be entitled to abandon the Race as a consideration for redress (amends RRS64.2)

27. BUS TRANSPORT TO SOUTHPORT

Buses will be available to transport crews to Southport prior to the race. There will be two pick up locations, QCYC and the Coles Express Petrol Station just off the M1 at Exit 97 - Old Cleveland Road.

There are also two drop off locations, the Southport Yacht Club and Mariners Cove/Marina Mirage

Timetable:

Saturday ONLY - Depart QCYC 0600.
Coles Express collection approx. 0615

Collection times at the Coles Express Petrol Station are approximate. The bus will not be waiting for passengers, so it is vital you arrive at the petrol station in good time.

Full address for Coles Express Petrol Station: 11 London Rd (cnr Cross St), Belmont, 4153, QLD.

Ticket are \$44 (including GST) per person. Seats are limited and must be booked and paid for in advance. No refunds are available except if cancelled by QCYC due to an insufficient number of passengers.

Bus bookings are via the link on the Surf to City Race website:

<https://surftocity.com/buses-to-southport/>

28. BERTHING AT QCYC

Berthing will be allocated on arrival at QCYC. The Club undertakes to provide a berth for all competitors in so far as is possible however skippers are required to assist in this regard by asking the Race Office or Marina Marshalls (if present) for berth allocations prior to leaving the boat and by ensuring space is not wasted due to inconsiderate berthing; large multihulls in particular MUST obtain a berth allocation prior to leaving the boat.

The ends of the T-Heads are reserved for offshore fleet monohulls where there is approximately 3m LAT. Berthing is free of

charge until 1000 hours on Tuesday February 13th.

Non-member parking for vehicles and trailers is available in the overflow parking area on the other side of the road from the club.

29. CATERING & BAR FACILITIES

QCYC will be open for food and drinks throughout the event. The service of alcoholic drinks is not available between midnight and 1000 hrs on Sunday. Please see Appendix E for further details.

30. OTHER CONDITIONS

The terms and conditions set out in the NOR, not specifically referred to in these SIs, that impose commitments on the Race Committee and obligations on a boat of continuing effect during the race are taken to be incorporated in these SIs.

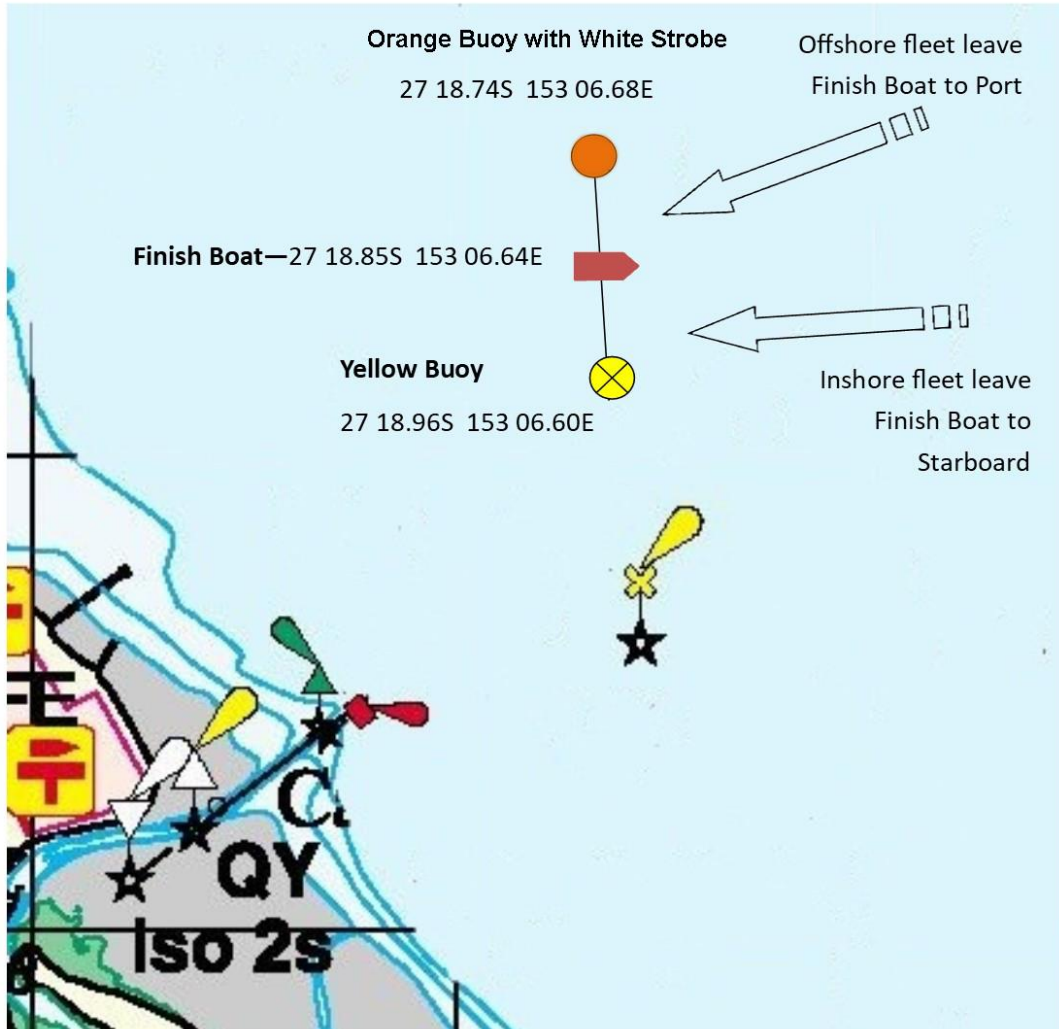
APPENDIX A – COURSE

The start will be approximately one nautical mile south of the Seaway Sand Pump Jetty. Approx. coordinates are 27 56.400'S | 153 27.230'E. **Start Boat: 24' Cougar Cat "SYC1"**

From the start, leave:

Mark	Description	Leave to	Approximate Position
South Stradbroke Island	Island	Port	
North Stradbroke Island	Island	Port	
Moreton Island	Island	Port	
NE2	FI R2.5s	Port	26 57.59S 153 20.32E
NE1	FI G4s	Starboard	27 00.01S 153 19.96E
NE4	FI R4s	Port	27 02.44S 153 20.70E
NE3	East Cardinal FI(3)10s	Starboard	27 04.70S 153 21.43E
EK1	QG	Starboard	27 08.54S 153 19.43E
EK2	QR	Port	27 08.50S 153 19.85E
M9	South Cardinal Q(6)&lfl 15s	Starboard	27 09.50S 153 20.16E
M8	FI R2.5s	Starboard	27 12.11S 153 17.21E
To the Finish Line	See Appendix B		

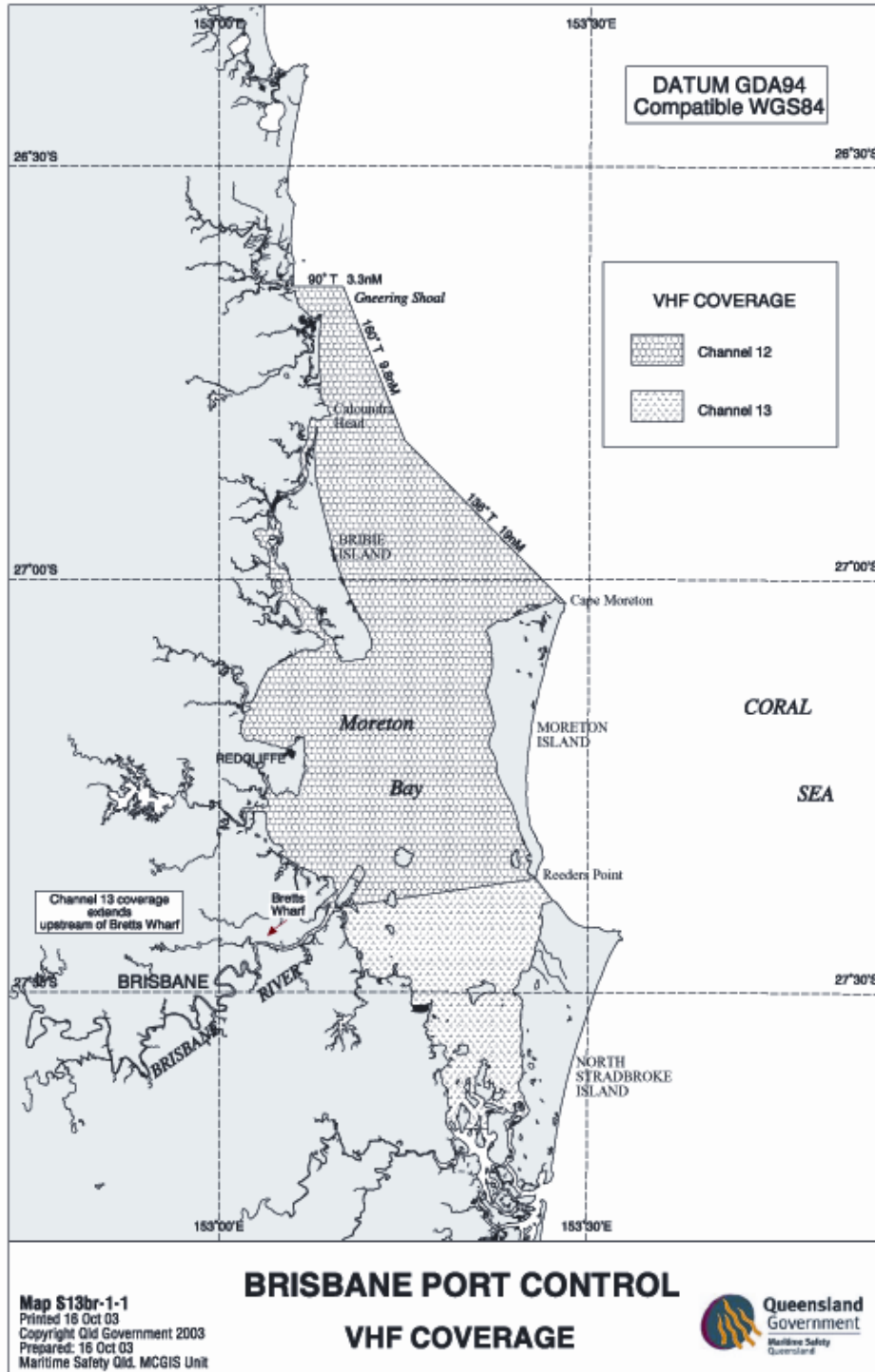
APPENDIX B – FINISH LINE



NOT TO SCALE

Informative diagram only and not subject to protest

APPENDIX C – BRISBANE VTS VHF COVERAGE MAP



APPENDIX D – NOTICE TO MARINERS

The following Notice to Mariners (if any) are provided for reference as at the date of publication of these Sailing Instructions.

All skippers are advised that there may be other NTM's applicable from time to time and are strongly advised to log onto the MSQ website before the race start to check for any later NTM's that may have been issued.

. <https://www.publications.qld.gov.au/dataset?q=notice+to+mariners>

APPENDIX E – SCHEDULE OF EVENTS

DATE	EVENT	LOCATION	TIME
Friday February 9	Compulsory Race Briefing	SYC	2030
Saturday February 10	Inshore Multihull start – Div 1	Broadwater	0910
	Inshore Faster Monohulls start - Div 2		0920
	Inshore Slower Monohulls start - Div 3		0930
	Offshore Monohull start	Gold Coast Seaway	1000
	Offshore Multihull start		1010
	Restaurant – Meals available	QCYC	Until 2200
	Pre-prepared Meals available		2200 to 0700
	Soft drinks and snacks available		From midnight to 0700 Sun
Bar – Opening Hours	TBC		
Breakfast available	0730 to 1030		
Bar opens	1000		
Lunch Available (bookings required)	1130		
2024 S2C Race Prize Giving Presentation	1200		
Sunday February 11			

*****Please note, bookings are required for Lunch on Sunday*****

Skippers, please make sure your crew members are aware.

Your cooperation is much appreciated.

Declaration Form

I, (owner/rep) _____ hereby declare that I was on board and in charge of the yacht _____

The yacht finished at:

Date _____ Time Hrs _____ Mins _____ Sec _____

If observable, the yacht in front of me was

and the yacht behind me was _____

Were all SI's, NOR / RRS complied with? YES / NO

If NO, please explain:

Did you partake and receive all position skeds? YES / NO

If NO, please explain:

Any other feedback for the Race Committee:

Signed: _____ Date & Time: _____





QUEENSLAND CRUISING YACHT CLUB

FURTHER INFORMATION

For further information please visit www.surftocity.com or contact

Vice Commodore: Linda Honey
0428 882 876

Queensland Cruising Yacht Club Inc. (QCYC),
Phone: 07 3269 4588

Email: raceentries@qcy.com.au

Sinbad Street, Shorncliffe, QLD, 4017.
PO Box 399, Sandgate, QLD, 4017

The event is run with the assistance of
Southport Yacht Club Inc. (SYC)
1 Macarthur Parade, Main Beach, Qld 4217.
Phone (07) 5537 7030

QCYC would like to acknowledge our main supporters for our sail racing events:

