



# 2025 INSHORE Sailing Instructions



Growth, prosperity, community.



**Race Day: Saturday 01st February 2025**



# SURF TO CITY INSHORE SAILING INSTRUCTIONS 2025



## IMPORTANT CONTACTS

### START BOAT AND RACE CONTROL UNTIL 1000HRS ON SATURDAY

VHF Channel: 09

Race Control: "Surf to City Race Control"

Start Boat: "Surf to City Start Boat"

### RACE CONTROL AFTER 1000HRS ON SATURDAY

VHF Channel: 72

Secondary VHF channel: 21

Race Control: "Surf to City Race Control"

Mobile: **0498 256 428**

Email: [raceentries@qcy.com.au](mailto:raceentries@qcy.com.au)

### RACE CHECK BOATS

VHF Channel: 72

Secondary VHF channel: 21

Blue RIB boat (stationed at QCYC): "QCYC 1"

Peel Island check boat: "QCYC 2"

Mud Island check boat "QCYC 3"

Finish boat: "QCYC FINISH"

### BRISBANE VTS

VHF Channel: 12

## COMMUNICATION REQUIREMENTS

### LOGGING IN PRIOR TO START

Seaway Tower on VHF 09

(refer SI 13)

### REPORTING DURING RACE - BOATS WITHOUT PERMANENTLY INSTALLED VHF

SMS to **0498256428** at the following times:

1200 hrs, 1600 hrs and 1800 hrs

(ref SI 19)

### REPORTING DURING RACE - ALL BOATS STILL RACING AFTER 1800 hrs

Report to Race Control when in the vicinity of:

- Yellow buoy north west of Bird Island
- Hanlon light beacon
- Hope banks beacon
- Coffee pots beacons

(ref SI 1.2.5)

Race Day Hours: 0900hrs on Saturday 1<sup>st</sup>  
February 2025 until last boat finishes

## AMENDMENTS TO THE SAILING INSTRUCTIONS

For the use of competitors. Please list any amendments to the Sailing Instructions issued by the Organising Authority here for easy reference.

AMENDMENT NUMBER	SECTIONS CHANGED	GENERAL NOTES
1		
2		

The 2025 – 2028 Racing Rules of Sailing under 'start' and 'finish' both refer to the 'hull' of a vessel. By way of definition the QCYC sailing committee has determined that "**bowsprits, spinnaker poles, prods, and bow pulpits are NOT part of a "hull"**".

## Surf to City Yacht Race 2025 Sailing Instructions - INSHORE

### 1. RULES

#### 1.1. General

The race will be governed by the current versions of:

- the rules, as defined in the Racing Rules of Sailing (RRS) 2025-2028 of World Sailing;
- the IRC 2024 Rules Parts 1, 2 and 3 as amended;
- the ORC Rating System 2024 rules as amended;
- the OMR Specification 2023 Version 9 rules as amended;
- Australian CBH Rating System Document (effective 01/07/2024)
- the rules and regulations of each One Design Class for which there is an eligible boat entered in the race;
- the current Prescriptions, Special Regulations and amendments of Australian Sailing (Special Regulations) effective 1 July 2021;
- applicable Special Regulations category:
  - Inshore Fleet - Category 5N

Except as any of these are modified by these Sailing Instructions (SI).

#### 1.2. Hours of Darkness

**1.2.1** Between sunset and sunrise, when a yacht cannot determine with certainty what tack the other yacht is on, she shall keep clear of that yacht. Competitors are reminded that part of the definition of "room" includes taking into account the existing conditions (including visibility). Official sunset and sunrise shall be as given by [timeanddate.com](http://timeanddate.com)

**1.2.2** Navigation lights must be fitted in accordance with the Special Regulations.

**1.2.3** A PFD shall be worn by all crew on all yachts after official sunset in accordance with the Special Regulations.

**1.2.4** A Personal Location Light complying with the Special Regulations shall be worn by all crew on deck at night.

**1.2.5** Any vessel still on the racecourse after 1800Hrs on Saturday, is to report to Race Control on the Race Channel when they are in the vicinity of the following marks/beacons as applicable.

- Yellow buoy northwest of Bird Island
- Hanlon light beacon
- Hope banks beacon
- Coffee pots beacons

#### 1.3. Commercial traffic, non-competing traffic and speed limits

The Racing Rules of Sailing (RRS) apply only between boats participating in the event, for the duration of the event. Should interaction occur with non-participating ships, the COLREGS shall apply and shall over-ride all other rules.

Attention is drawn to Rule 9 - 'Narrow Channels':- **a sailing vessel shall not impede the passage of a vessel which can safely navigate only in a narrow channel or fairway.**

Attention is drawn to speed limits on selected areas of the course. These include a speed limit of six knots within thirty meters of anchored boats. It is recommended you consult the 'Schedule of speed limits in Queensland' document available from the MSQ website

Any boat interfering with commercial traffic WILL be disqualified.

#### 1.4. Organising Authority

The Organising Authority is the Queensland Cruising Yacht Club Inc.

## 2. TIME OF START

**2.1** The first start (Multihulls) is scheduled to start at 0910 hours on 01st February 2025.

**2.2** The second start (Faster Monohulls) is scheduled to start at 0920 hours

**2.3** The third start (Slower Monohulls) is scheduled to start at 0930 hours

**2.4** The Warning Signal will be the numeral pennant for the number of the start and will be displayed 5 minutes prior to each start.

**2.5** The race may not start whilst an official Gale Warning (or stronger) is current for any part of the course and may be postponed or abandoned.

### **3. RESPONSIBILITY**

**3.1** The safety of a boat and her crew is the sole and inescapable responsibility of the person in charge who shall do their best to ensure that the boat is fully found, thoroughly seaworthy and manned by an experienced crew who have undergone appropriate training and are physically fit to face bad weather. They must be satisfied as to the soundness of hull, spars, rigging, sails and all gear. They shall ensure that all safety equipment is properly maintained and stowed and that the crew know where it is kept and how it is to be used. They shall also nominate a person to take over the responsibilities of the Person in Charge in the event of their incapacitation.

**3.2** Neither the establishment of these Special Regulations, their use by race organizers, or the inspection of a boat under these Special Regulations in any way limits or reduces the complete and unlimited responsibility of the person in charge.

**3.3** The attention of every person is drawn to Special Regulation 1.02 and also to the importance of having suitable and adequate personal insurance. It is the

responsibility of owners to ensure their crew has had this drawn to their attention.

### **4. OFFICIAL NOTICE BOARDS**

**4.1.** Brisbane: Administration Office, Queensland Cruising Yacht Club.

**4.2.** Southport: Reception Area, Southport Yacht Club

### **5. COMPETITORS MEETING**

**5.1** A compulsory Race briefing (including a Weather Briefing) will be held at Southport Yacht Club Board Room at 2030 on Friday, January 31st, 2025.

The skipper and at least one member of the crew competing in the Race must either physically attend the whole of the race briefing or participate via electronic media. It is recommended that the skipper and the (designated) navigator attend in this manner. Arrangements will be made for the race briefing to be broadcast via Facebook on Live Stream at the Race Facebook page.

Those watching the Facebook Live Stream will be asked to either like the stream at its conclusion or post a comment declaring they have viewed it, to ensure their record of participation. Either method will allow participants to ask questions in the course of the briefing.

It is recommended that all other crew members watch the Live Stream.

### **6. INSPECTIONS AND INFORMATION**

**6.1.** Boats shall be made available for spot inspections by the Race Committee or its nominee at any time from 3pm on the day prior to the race start until four hours after the recorded finish time.

**6.2.** Personal information is obtained about on shore yacht contacts and crew members in the crew list. That information is obtained for use in search and rescue situations and for media purposes. The

information will be given to search and rescue authorities and organisations, the Water Police, Marine Rescue Units and media representatives, and may be passed on by them to other organisations. Crew members may gain access to the information held about them by contacting the Organising Authority.

## **7. TIDES AND DEPTHS**

### **7.1 Tides**

Saturday, February 01

HIGH 1.78mtr @ 10:18 (GCS)

LOW 0.45mtr @ 18:18 (BB)

HIGH 2.11mtr @ 23:59 (BB)

Sunday, February 02

LOW 0.42mtr @ 05:59 (BB)

HIGH 2.52mtr @ 12:15 (BB)

LOW 0.45mtr @ 18:55 (BB)

GCS – Gold Coast Seaway

BB – Brisbane Bar

## **8. HANDICAP CATEGORIES, DIVISIONS AND SCORING**

### **8.1 Categories and Divisions**

The race will be conducted in PHRF, OMR, ORC club and CBH Handicap Categories.

The composition and allocation of boats into Divisions in a Handicap Category will be determined by the Race Committee and shall not be subject to protest or grounds for a request for redress (amends RRS 60.1 and 62.1(a)).

### **8.2 Scoring**

Scoring calculations as defined in NOR 8.

## **9. CHANGES TO SAILING INSTRUCTIONS**

Changes to Sailing Instructions shall be in writing and posted to the Race Website and social media and emailed to skippers and/or boat representatives. Changes will be posted no later than 0830 hours on the day of the race.

Code Flag “L” may accompany changes made following the conclusion of the

Competitors Briefing and if so will be flown from the Flagpole located to the east of the SYC Main Beach Clubhouse. Changes will be posted no later than 0830 hours on the day of the race.

On the water, changes will be communicated on the race channel prior to the warning signal.

This amends 90.2c.

## **10. RACE CHECK BOATS**

**10.1** The Race check boats shall be marked with an Orange Flag with Official written in black letters

**10.2** The Race check boats are located at Peel Island (QCYC 2) and Mud Island (QCYC 3). They will be checking you off the competitors list when you pass them. Competitors must ensure they assist with their identification as much as possible.

**10.3** The Race check boats may be contacted on VHF 72 to relay messages to Race Control.

## **11. REPORTING AT START**

Boats intending to start shall Log On for the race with Seaway Tower on VHF 09.

Log on must not be attempted before 0800 or during start sequences (one minute prior to warning signal through to one minute after start signal for each start) during which time radio silence must be observed.

Boats unable to check in via VHF may check in via SMS to **0498256428** however this should be used as a backup method only. Boats who fail to check in will be considered non-starters.

## **12. START LINE**

**12.1** The Start Line will be an imaginary line between the main mast of the Start Boat flying a SYC Burgee above an orange flag or shape at the Starboard end of the line

and a Black and White Chequered Cylinder at the Port end of the line.

**12.2** A limit mark (RED inflatable buoy) may be placed at the starboard end of the line between the start vessel and the start buoy, if a yacht passes between this limit mark and the start vessel they must re-start by rounding the start vessel and start correctly.

**12.3** The start line will be established not less than 20 minutes before the warning signal for the first start.

**12.4** No vessel is to block or impede the main channel area as indicated on the chartlet shown in Appendix A

**12.5** Vessels in the second start are not to occupy the start line and area immediately south of the start line (pre-start area) including the main channel until all vessels from the first start have started and cleared the start line. The same applies for vessels in third start with respect to start two vessels.

**12.6** The "I Flag Rule" (RRS 30.1) will apply from the one minute signal. When any part of a boat's hull, crew or equipment is on the course side of its starting line or its extensions during the one minute before the starting signal, the boat shall return to the pre-start side of its starting line around either end of the line and start (amends RRS 30.1).

### **13. START SIGNALS**

**13.1** Visual signals will be made from the Start Boat.

**13.2** Visual signals take precedence over sound signals.

**13.3** The race will be started in accordance with Rule 26. The Class Flag will be the numeral pennant for the number of the division.

### **14. RECALLS**

**14.1** Individual recalls will be signalled in accordance with RRS 29.1 from the Start Boat. A sound signal may be made (amends RRS 29.1).

**14.2** A boat subject to recall will pass around either end of the line before recrossing the line to correctly start. (in accordance with RRS 30.1)

**14.3** A boat subject to recall may be identified by a Race Officer on VHF 09, transmitted up to five minutes after the start signal.

### **15. COURSE**

Refer Appendix B.

### **16. GOING AGROUND**

In the event of going aground whilst racing, yachts are permitted to use their engines or other method of propulsion as a means of freeing the yacht. Once afloat again, engines must be immediately stopped. The yacht is then permitted to resume racing but will be required to perform a 720 penalty turn as soon as it is safe to do so.

All instances where an engine or other method of propulsion was used for this purpose must be recorded on the Race Declaration.

Abuse of this rule will result in disqualification from the race

### **17. REPORTING SCHEDULES**

**17.1** Yachts who have declared that they are using a combination of handheld VHF Radio and Mobile Phone for communications are required to make contact with Race Control on a regular basis in accordance with 17.2 below.

**17.2** The communication schedule to be followed is:

1200 hrs

1600 hrs

1800 hrs

And thereafter at each point in SI 1.2.5

**17.3** At each sked time yachts must contact Race Control via SMS to **0498256428** giving their yacht name and position. VHF 72 may be used as a backup alternative.

**17.4** Yachts missing skeds may receive time penalties of two minutes added onto their elapsed race time per instance.

**17.5** Yachts who have retired from the race shall remain on the Reporting Schedules until they have reached safe port.

## **18. FINISH LINE**

Refer to Appendix C.

**18.1** The finish line will be an imaginary line between the flag mast of the QCYC Committee Vessel stationed approximately half a mile north of the Fisheries Beacon and a yellow inflatable buoy positioned approximately 200m south of the Finish Boat. The Finish Boat will form the Starboard end of the line and the buoy will form the Port end of the line.

**18.2** The approx. position for the finish boat will be 27 18.85S 153 06.64E

The approx. position for the yellow buoy will be 27 18.96S 153 06.60E. The inflatable Yellow buoy may be lit with a white strobe light or similar. Failure of the strobe light will not be grounds for redress.

Fisheries Beacon is a special yellow beacon located approx. 27 19.40S 153 06.43E

### **18.3 Approaching the Finish Line**

Yachts are to contact the Committee Vessel (call sign: QCYC FINISH) on the Race Channel when approx. half a nautical

mile from the finish line. During the hours of darkness, where possible, vessels are also requested to inform QCYC FINISH of the yacht immediately in front and the one behind.

**18.4** When finishing after sunset, yachts will illuminate their Sail Numbers and after finishing will contact the committee vessel (call sign: QCYC FINISH) by hailing or calling on the Race Channel to ensure they have been correctly identified.

**18.5** If the finish boat is not on station a Orange Buoy in approximate position 27 18.74S 153 06.68E will form the Starboard end of the line.

## **19. WITHDRAWALS**

**19.1** Any yacht withdrawing from the race is required to notify the Race Control as soon as possible with its position, reason for retirement and proposed destination. They should contact the Race Control Centre again once the yacht has reached its destination.

**19.2** Notification of withdrawal via Facebook and other social media is not acceptable

**19.3** Competitors who withdraw from the race before the start are required to telephone the Race Director on 0498 256428.

**19.4** Should the yacht not be able to contact the Race Control, they should contact a third party and ask them to relay a message to the Race Control.

**19.5** Failure to comply with this section may result in an unnecessary search and rescue with the cost being born by the offending owner and skipper.

## **20. MISCELLANEOUS**

**20.1** Yachts experiencing wind strengths of 40 knots or greater are required to radio in their position and wind and wave conditions being experienced to Marine Rescue Brisbane on VHF 21.

**20.2** Yachts that fail to complete and submit all necessary race documentation to the Race Director within 1 hour of the completion of the compulsory Competitors Meeting will be recorded as non-starters

**20.3** All participating vessels are to keep a radio watch on Channel 12 in the vicinity of commercial shipping channels.

## **21. TIME LIMITS**

**21.1** A boat shall not start later than thirty minutes after the starting signal.

**21.2** There shall be no finish time limit.

## **22. DECLARATIONS**

Refer end of this document for a copy of the declaration form.

**22.1** All boats shall lodge a declaration. Declarations should be lodged with the Race Director within two hours of finishing. This can be done by:

- Posting your declaration into the declaration box located in the QCYC reception area.
- Emailing to [raceentries@qcy.com.au](mailto:raceentries@qcy.com.au)
- SMS photo to **0498256428**

Failure to lodge your declaration by 0900hrs on Sunday 02<sup>nd</sup> February will result in a race time penalty of five minutes being added to the yachts elapsed race time.

**22.2** The following circumstances shall be noted:

- an infringement occurs, however minor, of any rule, regulation, sailing instruction or radio instruction; or
- the boat has taken a One Turn or Two Turns Penalty; or

- the boat acknowledges a Scoring Penalty in accordance with RRS 44.3; or
- the boat records its own finish time under SI 19.4; or
- compliance with the SI's and RRS.
- if possible, the yachts finishing immediately in front and behind.

## **23. RESULTS**

### **23.1 Provisional and Final Results**

Provisional or final results will be provided following the conclusion of the Presentation of Trophies. Further, they will be posted to the Race Website as soon as practical following the conclusion of the Presentation of Trophies.

### **23.2 Progressive Positions**

During the race, progressive positions may be published by the Race Committee and on the Race Website. Any progressive results that are published will have no bearing on, nor affect, the final results and will not form the basis of a protest or constitute grounds for redress (amends RRS 60.1 and 62.1(a)).

## **24. TROPHIES**

The Surf to City Trophy Presentation event for the Inshore Division begins at not before 11:00am on Sunday 02<sup>nd</sup> February at Queensland Cruising Yacht Club.

A crew member of the yacht must be present at the presentation to receive any prizes. Prizes not collected during the presentation will not be available for collect at a later date.

Prizes will be awarded to First in each Category and Division. Categories or Divisions with five boats or more will be awarded Second place prizes. Categories or Divisions with seven boats or more will also have a Third place prize.

PHRF divisions with more than five boats will be awarded Line Honours prizes.



All PHRF divisions will also have a winner overall award.

Other prizes may be awarded as determined by the OA.

## **25. RULE INFRINGEMENTS**

(Amends RRS 44, 63.1 and 64).

**25.1** The Protest Committee may apply a scoring of up to 40% or time penalty in lieu of disqualification for an infringement of a rule or sailing instruction.

**25.2** A boat which is found after a protest hearing to have infringed RRS Part 2 or Rule 28 shall receive a scoring penalty of 30%.

**25.3** All penalties, unless otherwise specified, shall be computed as a percentage of the number of entries to the nearest whole number (rounding .5 upwards) in each Category or Division.

**25.4** A boat that causes serious damage or injury to another boat or its crew or for an infringement of RRS69.1 may be disqualified.

## **26. APPLICATION OF PENALTIES**

(Amends RRS 44.3 (c))

**26.1** A boat infringing in more than one incident shall receive a separate penalty for each infringement.

**26.2** Placings will be awarded after the imposition of penalties or granting or redress.

**26.3** The imposition of penalties will affect the placing of other boats, which shall be advanced to fill all preceding places vacated by penalised boats, subject to tied, elapsed or line honours results. If two or more boats share the same placing after the application of penalties, the boat(s) with the least or no penalty shall be placed above the boat(s) with the greatest penalty.

**26.4** The Race Committee may impose a penalty on a boat without a hearing in respect to any rule infringements disclosed by the boat in its Declaration, except that the boat shall be entitled to a hearing when it satisfies the Protest Committee that an error may have been made (amends RRS 63.1)

## **27. NUMBER OF ENTRIES**

For the calculation of penalties and results, the number of entries in each Handicap Category and Division shall be in accordance with the List of Entries as posted at the time of the Race Briefing.

## **28. PROTESTS AND REQUESTS FOR REDRESS**

(Amends RRS 61, RRS62, RRS T1 and RRS T2 .

**28.1** Protests shall be in accordance with RRS 61.

**28.2** Protests concerning eligibility of a boat shall be delivered to the Race Director within two hours of the conclusion of the Race Briefing.

**28.3** Protests or requests for redress arising from the Race shall be delivered to Race Control within two hours of the finishing time of the protesting boat.

**28.4** RRS Appendix T (Arbitration) applies and is extended to also include Rule 28 and Part 4 of the RRS.

**28.5** Post-race penalties given via arbitration may include time penalties.

**28.6** There is no time limit for protests by the Race Committee or Protest Committee.

**28.7** The Protest Committee shall not be entitled to abandon the Race as a consideration for redress (amends RRS64.2)

## **29. BUS TRANSPORT TO SOUTHPORT**

Buses will be available to transport crews to Southport prior to the race. There will be two pick up locations, QCYC and the Coles Express Petrol Station just off the M1 at Exit 97 - Old Cleveland Road.

There are also two drop off locations, the Southport Yacht Club and Mariners Cove/Marina Mirage

Timetable:

**Saturday ONLY** - Depart QCYC 0600. Coles Express collection approx. 0615

Collection times at the Coles Express Petrol Station are approximate. The bus will not be waiting for passengers so it is vital you arrive at the petrol station in good time.

Tickets are \$44 (inc GST) per person. Seats are limited and must be booked and paid for in advance. No refunds are available except if cancelled by QCYC due to lack of passengers.

Full address for Coles Express Petrol Station: 11 London Rd (cnr Cross St), Belmont, 4153, QLD. **Bookings are via the link on the Race website** **Buses to Southport - Gladstone Ports Corporation Surf to City Yacht Race 2025.**

### **30. BERTHING & RETRIEVING AT QCYC**

**30.1** Berthing will be allocated on arrival at QCYC. The Club undertakes to provide a berth for all competitors in so far as is possible however skippers are required to assist in this regard by asking the Race Office or Marina Marshalls (if present) for berth allocations prior to leaving the boat and by ensuring space is not wasted due to inconsiderate berthing; large multihulls in particular **MUST** obtain a berth allocation prior to leaving the boat.

The ends of the T-Heads are reserved for offshore fleet monohulls where there is approximately 3m LAT. Berthing at QCYC

is free of charge until 1000 hours on Tuesday, February 04<sup>th</sup> 2025.

**30.2** The Club ramp and adjacent upstream Public ramp will be available for recovery. All boats with trailers must be removed from the water at the first opportunity.

Non-members parking for vehicles and trailers is available in the overflow parking area on the other side of the road from the club.

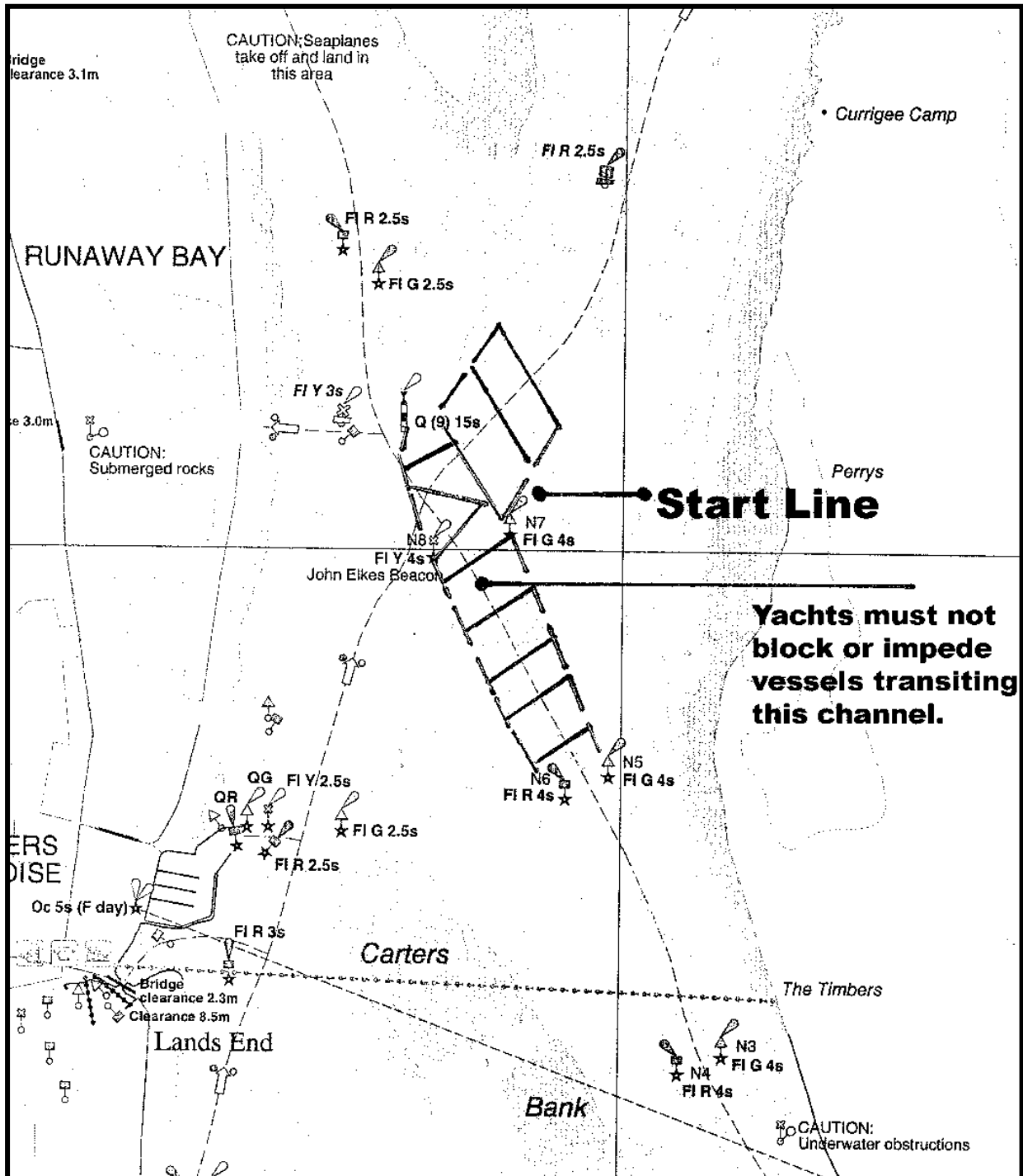
### **31. CATERING & BAR FACILITIES**

QCYC will be open for food and drinks throughout the event. The service of alcoholic drinks is not available between midnight and 1000 hrs on Sunday. Please see Appendix E for further details.

### **32. OTHER CONDITIONS**

The terms and conditions set out in the NOR, not specifically referred to in these SIs, that impose commitments on the Race Committee and obligations on a boat of continuing effect during the race are taken to be incorporated in these SIs.

# APPENDIX A – START AREA

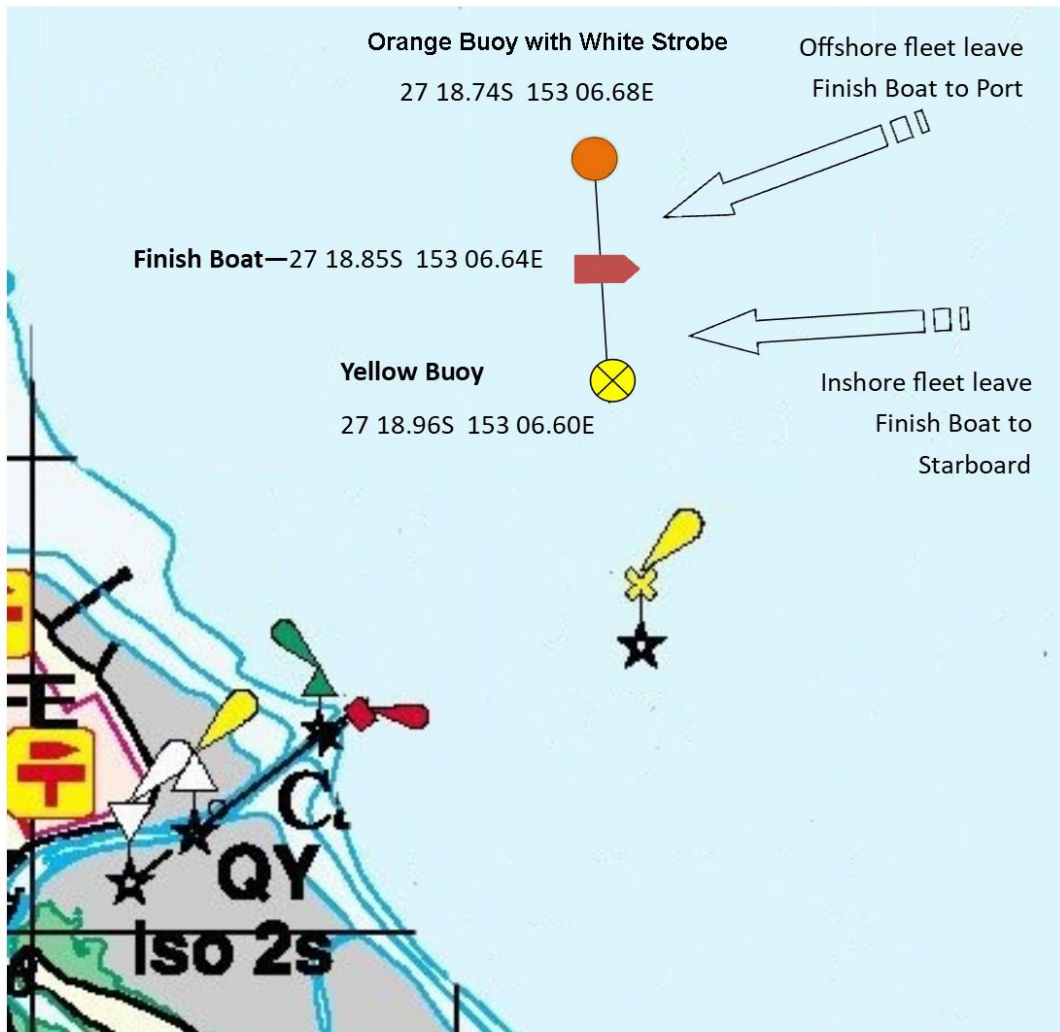


## APPENDIX B – SURF TO CITY 2023 INSHORE COURSE

<i>From the start leave:</i>		
Crab Island	Port	
Yellow Crossover at Sovereign Island	Port	
East Cardinal at Sovereign Island	Port	
Woomgoompah Island	Port	
North Cardinal (Jumpinpin)	Port	Located north west of Tulleen Island
Dinner Island	Port	
Kangaroo Island	Starboard	
Vessels at Maas Moorings	Starboard	
Russell Island	Starboard	
Long Island	Port	
Karragarra Island	Starboard	
McLeay Island	Port	
Lamb Island	Port	
Eric Early Light	Starboard	
Pelican Banks	Port	
Goat Island	Starboard	
Bird Island	Starboard	
Yellow Buoy NW of Bird Is	Starboard	Caution: Shifting sandbank keep sufficient clearance
Peel Island	Port	
Hanlon Light	Port	
Hope Banks Light	Port	
St Helena Island	Port	
Mud Island	Starboard	
East & West Coffee Pots Beacons	Port	All vessels must cross the Brisbane River Entrance Channel between the East & West Coffee Pots Beacons and the next seaward set of entrance beacons.
Red Beacon (Koopaa Channel outer entrance marker)	Port	Approx position: S27°19.750' E153°10.260'
To the Finish Line		

**NOTE:** All lateral channel markers (Port and Starboard) are marks of the course and are to be observed and passed or rounded in accordance with the IALA (International Association of Marine Aids to Navigation and Lighthouse Authorities) Buoyage System “A” protocols.

**APPENDIX C – FINISH LINE**



NOT TO SCALE

Informative diagram only and not subject to protest

## **APPENDIX D – NOTICES TO MARINERS**

The following Notices to Mariners are provided (if any) for reference as at the date of publication of these Sailing Instructions.

All skippers are advised to log onto the MSQ website before the race start to check for any later NTM's that may have been issued.

<https://www.publications.qld.gov.au/dataset?q=notice+to+mariners>

## APPENDIX E – SCHEDULE OF EVENTS

DATE	EVENT	LOCATION	TIME
Friday January 31	Compulsory Race Briefing	SYC	2030
Saturday February 01	Division 1 - Inshore Multihull – warning signal not before	Broadwater	0905
	Division 2 - Inshore Faster Monohulls – warning signal not before		0915
	Division 3 - Inshore Slower Monohulls – warning signal not before		0925
	Offshore Monohull - warning signal not before	Gold Coast Seaway	0945
	Offshore Multihull – warning signal not before		0955
	Restaurant – Meals available	QCYC	Until 2200
	Pre-prepared Meals available		2200 to 0700
	Soft drinks and snacks available		From midnight to 0700 Sun
Bar – Opening Hours	TBC		
Breakfast available	0730 to 1030		
Bar opens	1000		
Inshore and Offshore Division Prize Giving Presentation	1100		
Lunch Available (bookings required)	1130		
Sunday February 02			

**\*\*\*Please note, bookings are required for Lunch on Sunday\*\*\***

**Skippers, please make your crew members are aware.**

**Your cooperation is much appreciated.**

# Declaration Form

I, (owner/rep) \_\_\_\_\_ hereby declare that I was  
on board and in charge of the yacht \_\_\_\_\_

The yacht finished at:

Date \_\_\_\_\_ Time Hrs \_\_\_\_\_ Mins \_\_\_\_\_ Sec \_\_\_\_\_

If observable, the yacht in front of me was

\_\_\_\_\_

and the yacht behind me was \_\_\_\_\_

Were all SI's, NOR / RRS complied with? ..... YES / NO

If NO, please explain:

\_\_\_\_\_  
\_\_\_\_\_  
\_\_\_\_\_

Did you partake and receive all position skeds? ..... YES / NO

If NO, please explain:

\_\_\_\_\_  
\_\_\_\_\_

Any other feedback for the Race Committee:

\_\_\_\_\_  
\_\_\_\_\_  
\_\_\_\_\_

Signed: \_\_\_\_\_ Date & Time: \_\_\_\_\_

JUVENILE CONSENT FORM



To the Race Committee,

I declare that I am the Parent or Legal Guardian of

.....  
.....

whose date of birth is ...../...../.....

and I hereby give consent for him/her to compete in the Surf to City Yacht Race

starting on ...../...../.....

on board the yacht

.....

and whose Owner/Charterer/Skipper is

.....

I confirm that I have read and understand the Notice of Race and the Risk Warning.

I hereby indemnify and release Queensland Cruising Yacht club Inc., each Sponsor, Officer,

Employee, Volunteer and member for the time being of QCYC Inc. from any claim or

demand

that I may have arising from this activity now or at any time in the future.

Name: ..... (please print)

Date:.....

Address:

.....

Executed:.....(sign here)

Witness: ..... (sign here)

Witness name:..... (please print)



## QUEENSLAND CRUISING YACHT CLUB

### FURTHER INFORMATION

For further information please visit [www.surftocity.com](http://www.surftocity.com) or contact

Vice Commodore: Linda Honey  
0428 882 876

Queensland Cruising Yacht Club Inc. (QCYC),  
Phone: 07 3269 4588

Email: [raceentries@qcyc.com.au](mailto:raceentries@qcyc.com.au)

Sinbad Street, Shorncliffe, QLD, 4017.  
PO Box 399, Sandgate, QLD, 4017

The event is run with the assistance of  
Southport Yacht Club Inc. (SYC)  
1 Macarthur Parade, Main Beach, Qld 4217.  
Phone (07) 5537 7030

QCYC would like to acknowledge our main supporters for our sail racing events:



*electric avenue*  
Electrical • Refrigeration & A/C • Plumbing